



Susila Dharma
INTERNATIONAL

Argentina, Australia, Brazil, Britain, Canada, Chile, Colombia, Cuba, D.R. Congo, Ecuador, France, Germany, India, Indonesia, Japan, Netherlands, New Zealand, Norway, Portugal, Spain, Serbia, Suriname, Ukraine, USA, Vietnam



working with humanity

The Association was founded in 1969 and is an affiliate organization of the World Subud Association. Susila Dharma International is a US-registered non-profit organization that holds special consultative status with the United Nations Economic and Social Council (ECOSOC), UNICEF and Department of Public Information (DPI).

Susila Dharma International is an association of national non-profit organizations and development projects from twenty-five countries dedicated to just and sustainable development through:

- **Building a network of support for grassroots development and humanitarian initiatives;**
- **Capacity-building for positive human, social, economic and environmental change;**
- **Raising awareness of global issues and interdependence.**

Our work is inspired by an awareness of our common humanity and shared responsibility for the well-being of others and our planet.

www.susiladharma.org

child development and education

Education and a safe, nurturing environment are essential to developing human potential. These provide the key to full social, economic and political participation so that those living in poverty can meet their basic needs and access all other rights. Yet 121 million children have no opportunity to attend primary school. In developing countries, only one child in three completes five years of schooling.

SDI activities:

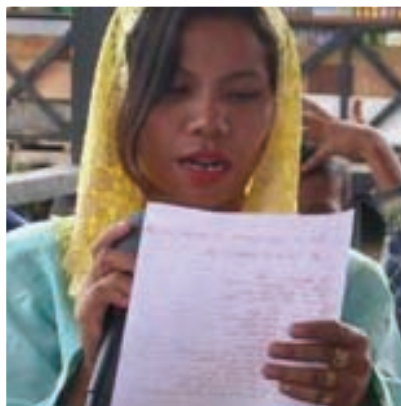
- **Build the knowledge of parents, childcare professionals institutions about child development, and improve interaction between caregivers and children;**
- **Improve access to, quality and relevance of education to transform lives and societies;**
- **Undertake small-scale improvements to school infrastructure and increase access to equipment, books and learning materials;**
- **Develop new and innovative teaching methods that enable children to reach their full human potential.**

community health and well-being

Every human being has a right to healthcare. However, a third of the world's population is denied this right. Every year in the poorest countries of the world, ten million infants die of preventable diseases and malnutrition. Some 500,000 women die during pregnancy and childbirth because they lack access to sufficient medical care. More than one billion people are without clean drinking water.

SDI activities:

- **Provide access to better nutrition, sanitation, health awareness and medical services through schools, clinics and community centres;**
- **Provide health education and nutritional programmes in schools;**
- **Identify community-based solutions to preventable diseases and hazards such as malnutrition, land-mines, malaria and HIV/AIDS;**
- **Empower individuals and communities to be active role in their own healthcare.**



community development and sustainable livelihoods

Many problems facing families and communities in the developing world are linked to inadequate employment, income and political voice. SDI members work to strengthen the social, economic and political participation of marginalised communities, increasing their ability to shape their own destiny. Through community development, the capacity to meet common goals is increased and families are helped to establish more secure and sustainable livelihoods.

SDI activities:

- **Promote the use of community participatory approaches to development;**
- **Build vocational, literacy and work-related skills;**
- **Provide opportunities for adult education, rehabilitation and social integration;**
- **Develop micro-savings and loan schemes that empower women and men to be more effective providers for their families.**



protecting the environment

Around the world, the poorest communities are the most vulnerable to climate change and environmental destruction. SDI draws on the talent of our network to promote new technologies and innovations that help make environmental protection, renewable energy and sustainable development a reality.

SDI activities:

- **Increase the use of alternative energy for schools, clinics and communities, and benefits to indigenous communities;**
- **Promote sustainable organic agriculture to lower costs for farmers, improve the health of the soil and reduce the negative impact of chemicals on humans and the environment;**
- **Reduce dependence on inefficient wood burning and other practices which damage the environment and endanger human health;**
- **Preserve wilderness areas.**

what does the sdi office do?

The SDI office works to strengthen the capacity of our members, local organizations, development professionals and volunteers to:

- Assist and mobilise the communities they serve;
- Develop and support practical and sustainable development initiatives;
- Build and manage effective community organizations;
- Lobby for and advocate for change;
- Make and sustain alliances with others who share their goals.

We facilitate shared learning between development practitioners by organizing training, education and networking events. We identify and coordinate human, technical and financial resources to assist members and community initiatives. We encourage and facilitate international advocacy through our consultative status with the UN and other international organizations. We design and implement specific initiatives to enhance the effectiveness of the members of the Network.

www.susiladharma.org



you can support the work of susila dharma international!

Name: _____

Address: _____

Tel: _____

Email: _____

VISA Master Card

Card# _____

Expiration Date (mm/yyyy) _____

Amount (\$US): _____

My donation is for: General Fund

Other (specify): _____

Cheques in \$US or \$CDN can be sent to:

Susila Dharma International Association
777 rue Campbell
Greenfield Park (Montréal)
Québec, J4V 1Y3 Canada
Tel 1-450-761-0592
Email: info@susiladharma.org

U.S. Non-Profit tax No. 98-0156249

Please send me a US Tax receipt.

Credit card donations can also be submitted through SDIA's website, www.susiladharma.org.